

Hotel Supervisor

Product description

The software Hotel Supervisor is a product designed and developed for the management of hotels with APICE's products on the standard and open technology LONWORKS®. The package interfaces with the operating system LNS3, and it is upgradeable.

Main features:

- Compatible with Windows XP or later.
- Connection via USB, PCI or LAN (recommended).
- Dedicated PC not required.
- Integrated autonomous reservation system or interfaced with dedicated management softwares for the Hotel.
- Developed for different sizes: up to 15, 50, 100, 250 and more than 250 rooms. Licences can be upgraded.
- Active assistance service (Standard or Exclusive Annual Assistance Contract are available; both of them includes software updates).
- On request, the package is customizable (after feasibility study).
- Interactive and customizable: you can upload audio and custom images to reports.
- HMS version: includes Hotel Supervisor and NL220 software for configuration and maintenance of LonWorks® systems

Main functions of the supervisor:

Room Temperature Control:

- Three levels of temperature are selectable (room by room, for groups, for floor, all) BUSY, FREE, WAITING.
- Three FCU control mode are selectable : WINTER, SUMMER, AUTOMATIC.
- A threshold of comfort adjustment can be set by the supervisor, by which the customer can change the temperature.
- Control of the heating elements with ON / OFF or gradual speed.
- Exclusion of the system in case of open windows.

Room Load Control:

- Enabled only in the presence of the card inside the internal reader.
- Distinguishes between hotel cards and generic cards, avoiding to force the loads.
- Distinguishes between customer cards and service cards, differentiating the loads enabled (TV, temperature comfort regulation, etc.).

Common Areas Control:

- Temperature control.
- Lighting control.
- Access control for other openings such as parking, back door, etc.

User Management password protected:

- The supervisor provides three levels of passwords.
- For each level you can create or modify users by the administrator profile.
- Each movement done is assigned to a user and is stored (if the user resets an alarm, the system keeps track of this).

Complete history of events and alarms that keeps track of all movements:

- Exported in various formats.
- Query filters by name, event, date, etc..

Automatic reset for clean room set by timer (after a period, if enabled, the system automatically calls for the cleaning service).

Integrated room reservation system (on and off).

Simple card allocation and withdrawal system, interfaced with the reservation system.

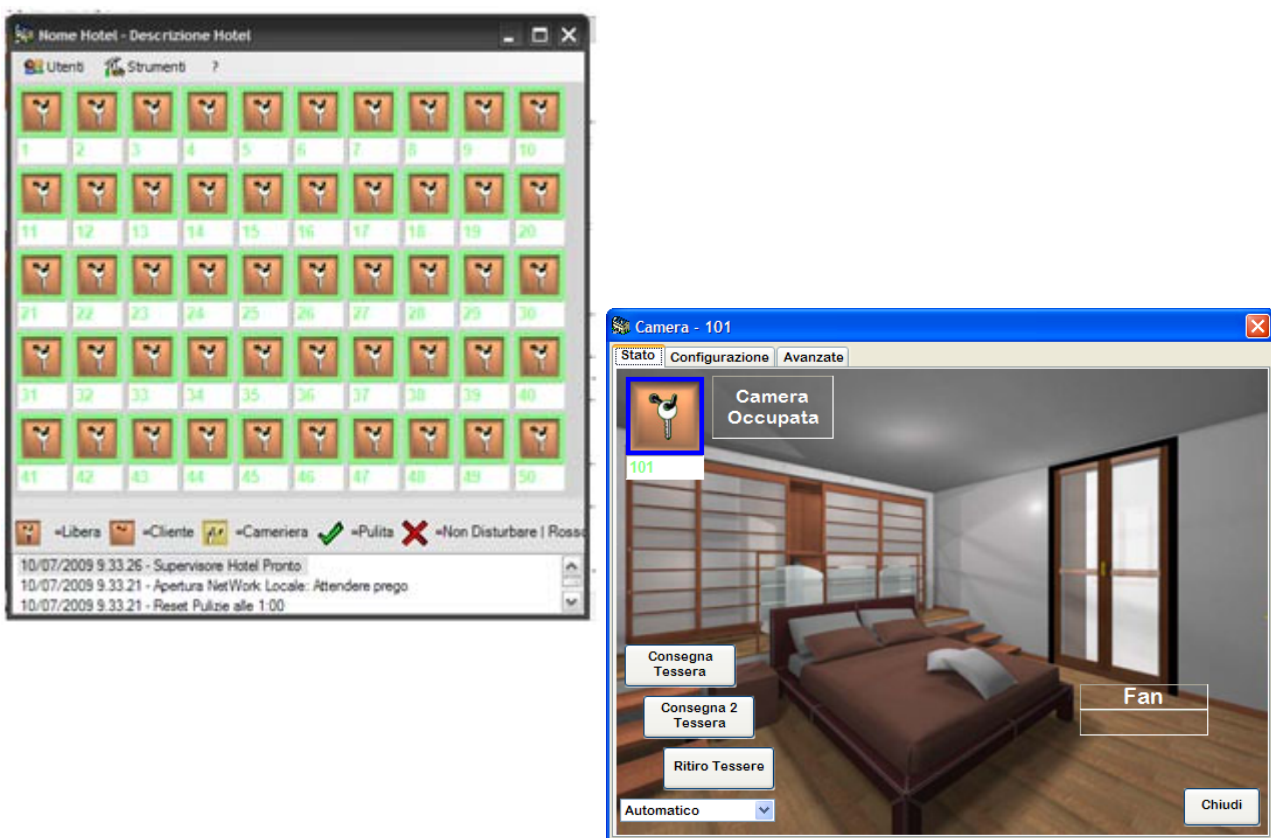


Fig. 1 - Main window and room detail

APICE Srl

Via G.B. Vico 45/b - 50053 Empoli (FI)

Tel.: 0571 - 920442 - Fax: 0571 - 920474

www.apice.org - sales@apice.org